



## Accessibility Guide for Wallops Wood Cottages

Telephone: 01489 878888

Email: [unwind@wallopswoodcottages.co.uk](mailto:unwind@wallopswoodcottages.co.uk)

Website: <https://www.wallopswoodcottages.co.uk>

Contact for accessibility enquiries: [unwind@wallopswoodcottages.co.uk](mailto:unwind@wallopswoodcottages.co.uk)



### Welcome

Located in the beautiful Meon Valley, our luxurious, accessible, child- and pet-friendly self-catering holiday cottages have spectacular views across the countryside to the South Coast. Within easy reach of Winchester, Petersfield, Southampton and Portsmouth, our well-equipped cottages have wood burners, individual gardens, hot tubs, underfloor heating and ensuite facilities. An indoor heated pool, which can be accessed by 7 steps or a hoist, and a jacuzzi, which can be accessed by 2 steps or a hoist are brand new. This will be followed by a games and events room later in the year. All cottages are accessible, with Teal being M3A-rated, Hedgehunter M2-rated and Early Mist, Glenside, Sundew and Skeldale M1-rated under the National Accessible Scheme. Silver Birch and Woodbrook are M3A rated and the latest additions to our site. We have a comprehensive list of accessible equipment available for guests to use.

### At a Glance

#### Level Access

- There is level access into:
  - M3A-rated cottages – Silver Birch, Teal and Woodbrook
  - M2-rated cottage – Hedgehunter

- M1-rated cottages – Early Mist, Glenside and Sundew
- There is one step access into:
  - M1-rated cottage – Skeldale (not suitable for wheelchairs)



## **Bedrooms**

- Hedgehunter, Silver Birch, Teal and Woodbrook have wheelchair-accessible bedrooms.
- We have non-allergic bedding available on request.
- A portable hoist and a profiling bed are available for hire from Solent Mobility.



## **Level access bedrooms & bathrooms**

- All routes to bedrooms have access of 750mm wide or more.
- All bedroom doors are 750mm wide or more.
- Teal, Silver Birch, Woodbrook and Hedgehunter have bedrooms with unobstructed floor space of 1200mm by 900mm, or more.
- Teal and Hedgehunter have a wet room with a level access shower, Silver Birch has two wet rooms and Woodbrook has a wet room and a free-standing bath with overhead shower, enabling the use of a hoist.



## **Hearing**

- All TVs have subtitles available.
- Most staff have had disability awareness training.



## **Visual**

- The walls and the doors have high colour contrast.
- We have information in large print.
- Taps have red and blue indicators and raised buttons to indicate which are hot and cold.

## General

The accommodation is rated by the National Accessible Scheme as suitable for:

- Older and less mobile guests
- Part-time wheelchair users
- Independent wheelchair users
- Guests with hearing loss
- Visually impaired guests



- Staff are available 24 hours a day.
- Most staff have disability awareness training.
- We have emergency evacuation procedures for disabled visitors.

## Getting here

Sheardley Lane  
Droxford  
Hampshire  
SO32 3AQ



### Travel by public transport

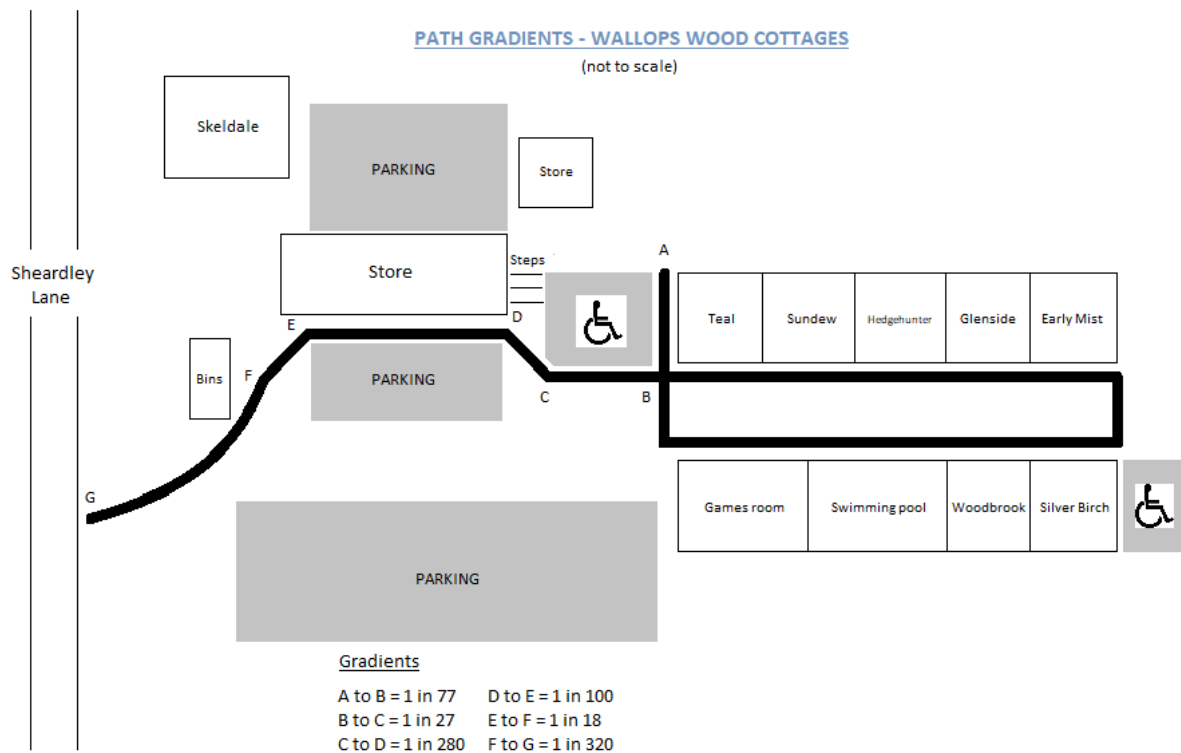
- You can get to Wallops Wood Cottages by train.
- The nearest train station is Petersfield. The train station is 12 miles / 19.3 km from Wallops Wood Cottages.
- Petersfield Railway Station is on the London Waterloo to Portsmouth Harbour line.
- Winchester Railway Station is 15 miles from Wallops Wood Cottages where there are connections to London Waterloo, Portsmouth Harbour, Basingstoke, Oxford, Manchester Piccadilly via Coventry & Stoke-on-Trent, Newcastle via Doncaster, Weymouth, Bournemouth, Poole, Reading and Southampton Central.
- From Petersfield you can get a taxi with Wheel Drive by calling 01730 892052. The taxi company has wheelchair accessible vehicles.
- From Winchester you can get a taxi with Wessex Cars by calling 01962 877749. The taxi company has a wheelchair accessible vehicle.
- Taxis are available from Grab-a-Cab in Fareham by calling 01329 825045.

## Parking

- We have free car parking with accessible parking spaces. The parking is less than 50 metres from the main entrance.
- There is a gentle incline from the road to the car park with a tarmac path that is 1300mm wide, or more.
- There is level access from the car park to the entrance of all cottages. The route is 1120mm wide, or more.
- The car park is gravel with block paving pathways to all cottages.
- There is parking directly outside our M3i-rated cottage, Teal, one space outside Early Mist and two spaces outside Silver Birch.



Pathway from car park to the cottages



## Arrival

### Entrances

- The entrances to all cottages except Skeldale have level access.
- Skeldale has one step access from the entrance to the kitchen and hallway (not suitable for wheelchairs).
- The doors are side-hung and manual.
- The front doors are 900mm wide, except Skeldale which is 700mm wide.
- When you arrive, we can help carry your luggage, by prior arrangement.



Entrance to Teal cottage



Step inside Skeldale entrance

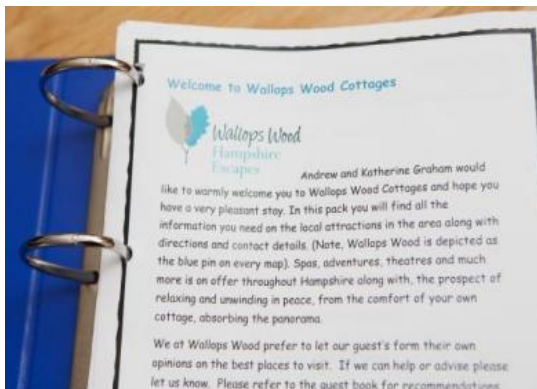
## Getting around inside

### Visual Impairment - General Information

- We have high colour contrast between walls and doorframes.
- Braille can be arranged on all appliances and cupboards.
- Taps have red and blue indicators and raised buttons to indicate which are hot and cold.



Teal cottage interior



Information folder in 14pt font



Vibrating alarm clock (a hand bell is also available)

## M3A-rated cottage – Teal

### Wheelchair-accessible bedroom & ensuite wet room

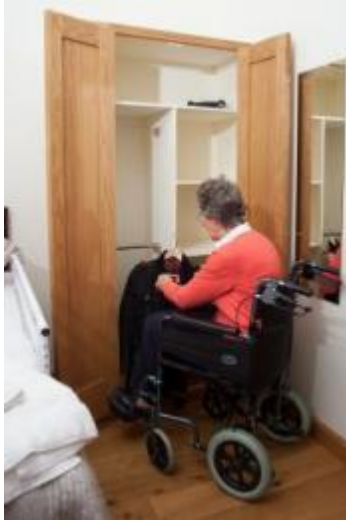
- There is one fully accessible bedroom in Teal.

- The route to the bedroom is 820mm wide, or more. The bedroom door is 820mm wide. There is 900mm at the side of the bed. The bed is 550mm high.
- The clothes rail in the wardrobe is adjustable and can be changed to the lower setting at 900mm high.
- The bed can be made up as either a super king or a twin.
- The space at the side of the bed is 900mm at its narrowest point. From other sides it is 1540mm or wider.
- There is a 850mm x 500mm dressing table with space for a front-facing wheelchair underneath.
- A portable hoist and profiling bed are available to be hired from Solent Mobility.
- All bedrooms have ceiling lights, bedside touch lamps and natural daylight.
- Lights are LED or have energy-saving bulbs.
- Subtitles are available on all televisions.
- We have non-allergic bedding available on request.
- All bedrooms are non-smoking.
- Teal has oak flooring, Silver Birch and Woodbrook have Amtico flooring.
- We use non-allergic cleaning products - details can be provided on request.
- We can move the bedroom furniture, where possible, to improve accessibility.
- We have bed blocks available on request.



Teal accessible bedroom





Teal accessible wardrobe

- Teal has an ensuite wet room with a level access shower and a bath. The bathroom door is 820mm wide. A shower chair is available. The direction of transfer to the toilet is to the front or side transfer via the shower area. There is 1050mm in front of the toilet. The toilet seat is 420mm high. A toilet raiser is available.
- The basin is 780mm high, but is adjustable and can be raised and lowered as required from 700mm to 870mm high. The taps are lever operated. There is space under the basin, with no pedestal.
- The bathroom has an emergency call system.
- Adjustable grab rails, toilet raisers, a showering wheelchair, a step stool, a perching chair and a commode are available – see the equipment list on our website.
- There is a swing bin in each cottage.



Teal accessible wet room





Teal wet room adjustable hand basin

### **Wheelchair-accessible kitchen**

- Teal has an open plan kitchen with level access.
- The route is 2200mm wide, or more.
- Work surfaces are 900mm high, with a lowered section at 760mm high. The lowered work surface has a clear underspace.
- Upon request, a convection oven/microwave and 2 ring electric hob can be placed on the lowered section of the work surface.
- The section beneath the sink can be removed upon request.
- The table and plates have high colour contrast.
- Flooring is non-slip vinyl in Teal. In Silver Birch and Woodbrook there is Amtico flooring.
- There is a carver chair at the dining room table.



Teal accessible kitchen



Teal accessible kitchen sink



Teal accessible oven on lowered section of kitchen work surface

## Living room

- The route from the main entrance to the lounge is level access and 1550mm wide or more.
- There is an electrically-operating riser/recliner chair in Teal.



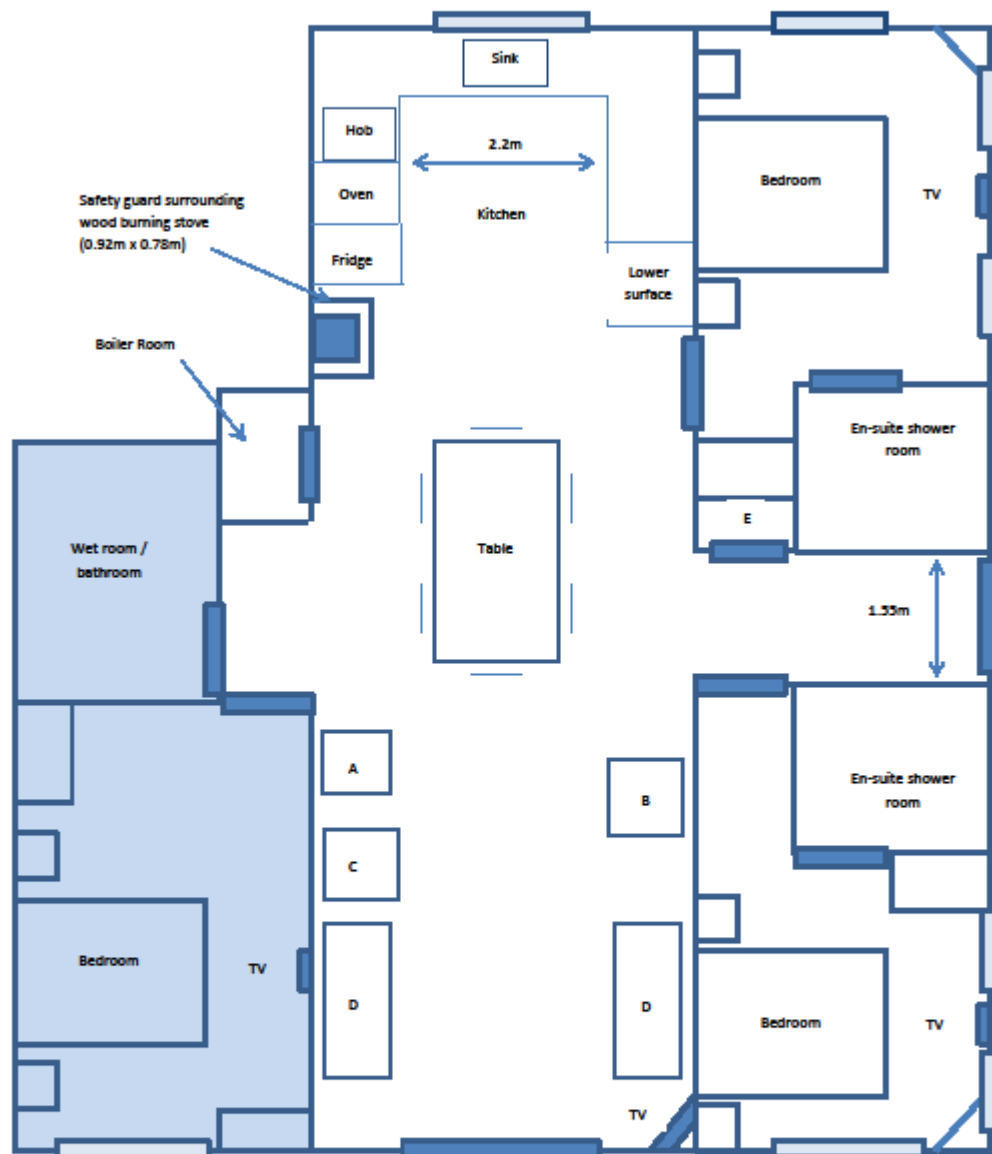
Teal living room



TEAL

Teal floorplan

## Teal Cottage (not to scale)



Patio doors open to 1.70m

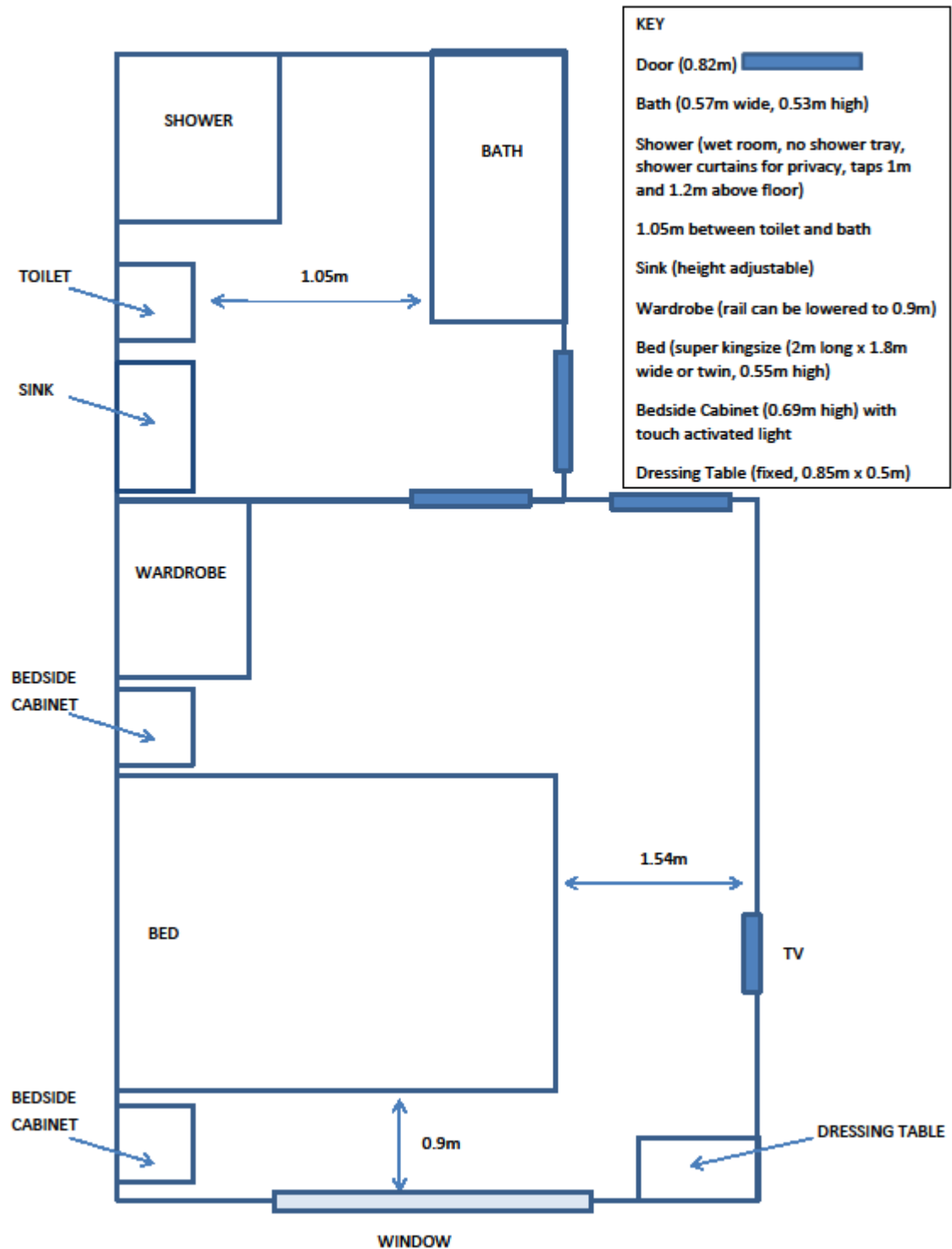
### Key

- A Straight Back Armchair (0.62m x 0.64m, seat height is 0.44m)
- B Electric recliner chair (0.84m x 0.80m, seat height is 0.49m)
- C Wingback Armchair (0.80m x 0.87m, seat height is 0.43m)
- D Two-seater Sofas (0.90m x 1.44m, seat height is 0.50m)
- E Cupboard

(All furniture can be moved to the most convenient layout)

All internal doorways (except cupboards) are 0.82m wide, front door is 0.90m wide

Teal - en-suite wet room /bathroom (not to scale)



## M3A-rated cottage– Silver Birch



### Wheelchair-accessible bedroom & ensuite wet room

- There are two fully accessible bedrooms in Silver Birch.
- The route to the bedrooms is 820mm wide, or more. The bedroom doors are 820mm wide. There is 900mm or more at the side of the beds. The beds are 550mm high.
- The clothes rail in the wardrobes is adjustable and can be changed to the lower setting at 900mm high.
- The beds can be made up as either super kings or twins.
- The space at the side of the beds is 900mm at its narrowest point. From other sides it is 1540mm or wider.
- There is a 850mm x 500mm dressing table with space for a front-facing wheelchair underneath.
- A portable hoist and profiling bed are available to be hired from Solent Mobility.
- All bedrooms have ceiling lights, bedside touch lamps and natural daylight.
- Lights are LED or have energy-saving bulbs.
- Subtitles are available on all televisions.
- We have non-allergic bedding available on request.
- All bedrooms are non-smoking.
- Silver Birch has Amtico flooring.
- We use non-allergic cleaning products - details can be provided on request.
- We can move the bedroom furniture, where possible, to improve accessibility.
- We have bed blocks available on request.



Silver Birch accessible bedroom





Silver Birch accessible wardrobe

- Accessible bedroom 1 has an ensuite wet room with a level access shower and a bath. The bathroom door is 820mm wide. A shower chair is available. The direction of transfer to the toilet is to the front or side transfer via the shower area. There is 1050mm in front of the toilet. The toilet seat is 420mm high. A toilet raiser is available. The basin is 780mm high, but is adjustable and can be raised and lowered as required from 700mm to 870mm high. The taps are lever operated. There is space under the basin, with no pedestal.
- Accessible bedroom 2 has an ensuite wet room with a level access shower and a bath. The bathroom door is 820mm wide. A shower chair is available. The direction of transfer to the toilet is to the front or side transfer via the shower area. There is 1050mm in front of the toilet. The toilet seat is 420mm high. A toilet raiser is available. The basin is 780mm high, but is adjustable and can be raised and lowered as required from 700mm to 870mm high. The taps are lever operated. There is space under the basin, with no pedestal.
- The bathrooms have an emergency call system.
- Adjustable grab rails, toilet raisers, a showering wheelchair, a step stool, a perching chair and a commode are available – see the equipment list on our website.
- There is a swing bin in each cottage.



Silver Birch accessible wet room



Silver Birch wet room adjustable hand basin

### **Wheelchair-accessible kitchen**

- Silver Birch has an open plan kitchen with level access.
- The route is 2200mm wide, or more.
- Work surfaces are 900mm high, with a lowered section at 760mm high. The lowered work surface has a clear underspace.
- Upon request, a convection oven/microwave and 2 ring electric hob can be placed on the lowered section of the work surface.
- The section beneath the sink can be removed upon request.
- The table and plates have high colour contrast.
- There is Amtico flooring in Silver Birch.
- There is a carver chair at the dining room table.



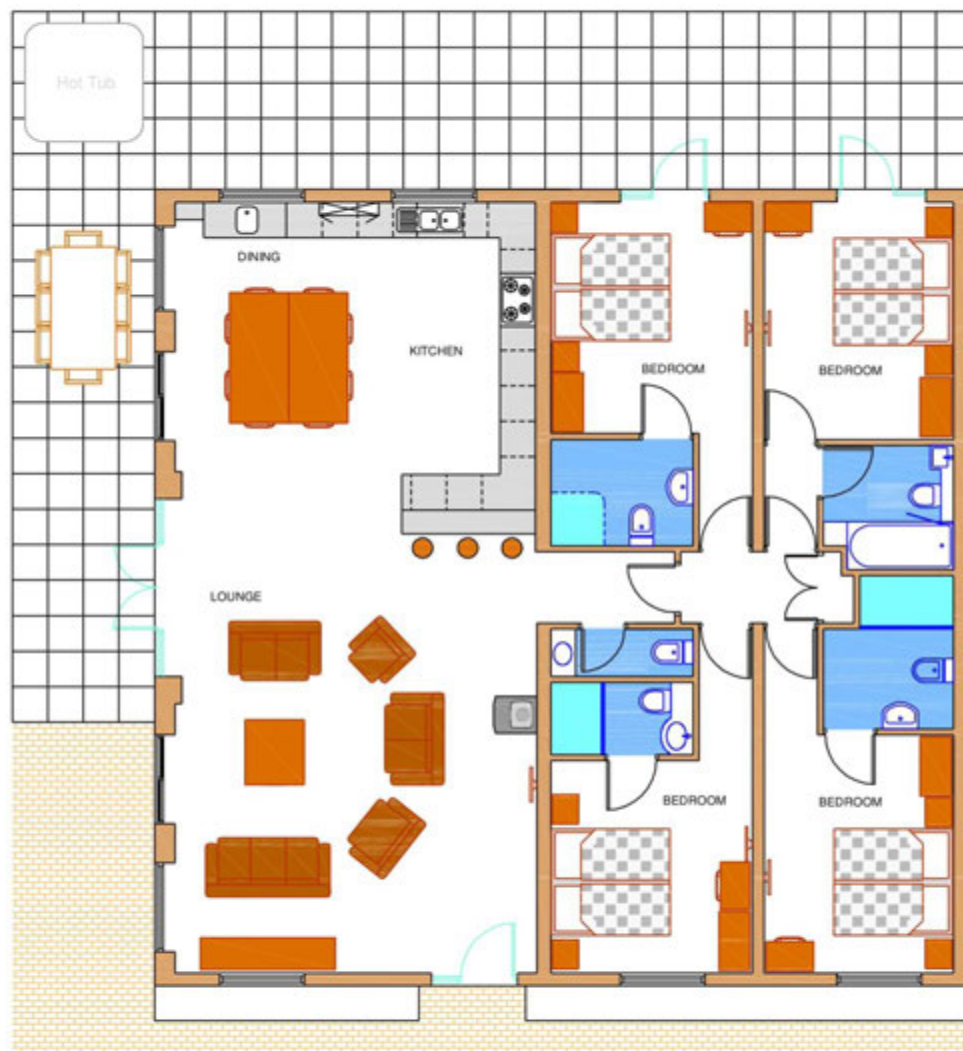
Silver Birch accessible kitchen

### **Living room**

- The route from the main entrance to the lounge is level access and 1550mm wide or more.



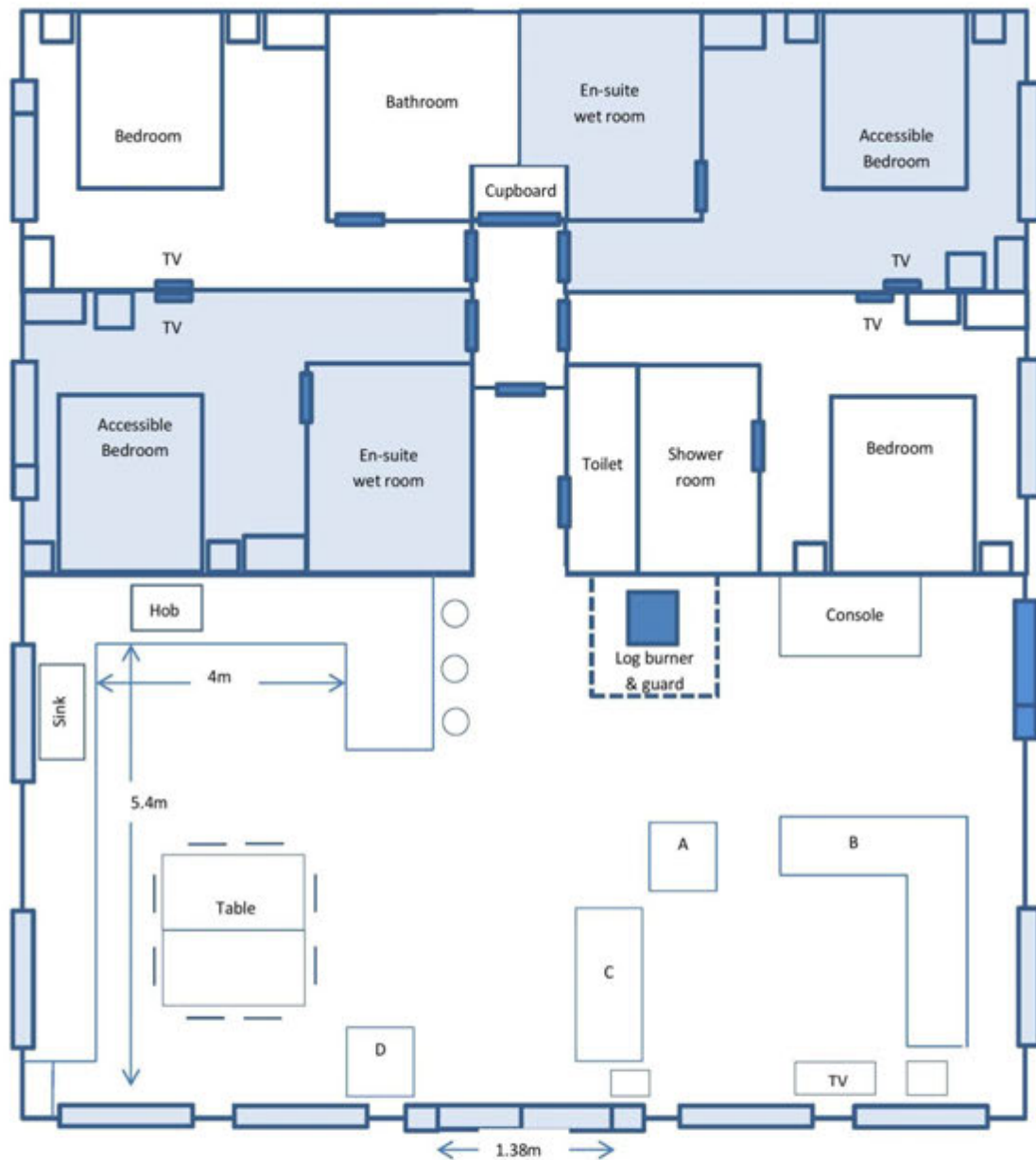
Silver Birch living room



SILVERBIRCH

Silver Birch floorplan

## Silver Birch Cottage (not to scale)



### Key

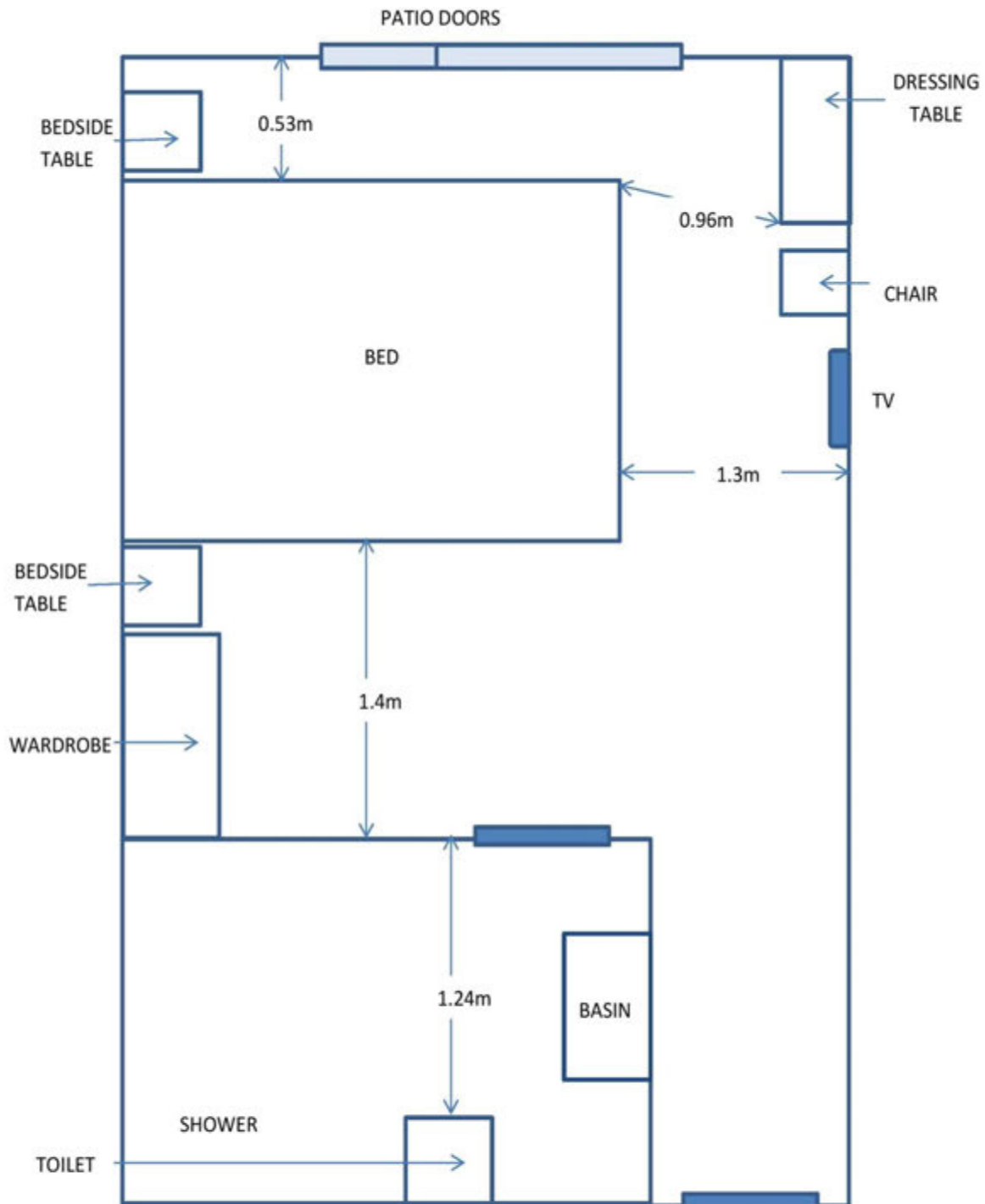
- A Armchair (1.19m x 0.93m, seat height is 0.54m)
- B Corner Sofa (2.56m x 2.56m, seat height is 0.55m)
- C Sofa bed (1.65m x 0.93m, seat height 0.54m)
- D Armchair (1.05m x 0.93m, seat height is 0.50m)

(All furniture can be moved to the most convenient layout)





IA All internal doorways (except cupboards) are 0.78m wide front door is 0.90m wide

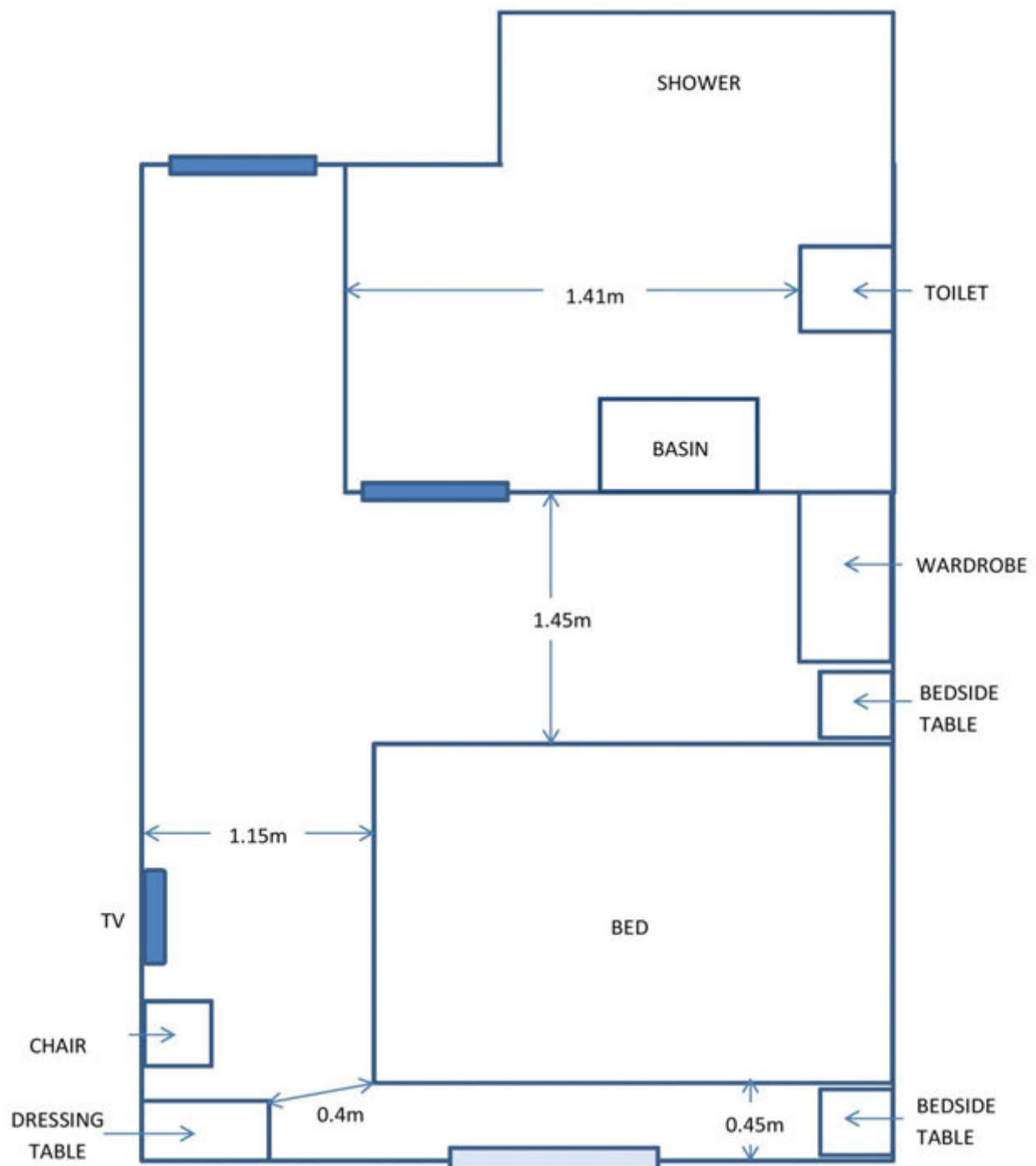
# Silver Birch - en-suite wet room 1 (not to scale)





## KEY

- Door (0.82m)  Patio door (0.85m) 
- Shower (wet room, no shower tray, taps 1.12m above floor)
- Sink (height adjustable)
- Wardrobe (rail can be lowered to 0.9m)
- Bed (super kingsize (2m long x 1.95m wide or twin, 0.67m high)
- Bedside table (0.69m high) with touch-activated light
- Dressing table (fixed, 0.75m x 0.45m)

## Silver Birch – en-suite wet room 2 (not to scale)



### KEY

- Door (0.82m)  Window (1.37m) 
- Shower (wet room, no shower tray, taps 1.12m above floor)
- Sink (height adjustable)
- Wardrobe (rail can be lowered to 0.9m)
- Bed (super kingsize (2m long x 1.9m wide or twin, 0.6m high)
- Bedside table (0.8m high) with touch-activated light
- Dressing table (fixed, 0.8m x 0.45m)



## M3i-rated cottage – Woodbrook



### Wheelchair-accessible bedroom & ensuite wet room

- There is one fully accessible bedroom in Woodbrook.
- The route to the bedroom is 820mm wide, or more. The bedroom door is 820mm wide. There is 920mm at the side of the bed. The bed is 570mm high.
- The clothes rail in the wardrobe is adjustable and can be changed to the lower setting at 900mm high.
- The bed can be made up as either a super king or a twin.
- The space at the side of the bed is 920mm at its narrowest point. From other sides it is 1330mm or wider.
- There is a 750mm x 450mm dressing table with space for a front-facing wheelchair underneath. Height 730mm
- A portable hoist and profiling bed are available to be hired from Solent Mobility.
- All bedrooms have ceiling lights, bedside touch lamps and natural daylight.
- Lights are LED or have energy-saving bulbs.
- Subtitles are available on all televisions.
- We have non-allergic bedding available on request.
- All bedrooms are non-smoking.
- Woodbrook has Amtico flooring.
- We use non-allergic cleaning products - details can be provided on request.
- We can move the bedroom furniture, where possible, to improve accessibility.
- We have bed blocks available on request.



Woodbrook accessible bedroom

- Woodbrook has an ensuite wet room with a level access shower. The wet room door is 820mm wide. A shower chair is available. The direction of transfer to the toilet is to the front or side transfer via the shower area. There is 1200mm in front of the toilet. The toilet seat is 490mm high. A toilet raiser is available.

- The basin is 840mm high, but is adjustable and can be raised and lowered as required from 700mm to 870mm high. The taps are lever operated. There is space under the basin, with no pedestal.
- The wet room has an emergency call system.
- The other bathroom in the cottage has a free standing bath with an overhead shower, enabling the use of a hoist where required
- Adjustable grab rails, toilet raisers, a showering wheelchair, a step stool, a perching chair and a commode are available – see the equipment list on our website.
- There is a swing bin in each cottage.



Woodbrook accessible wet room



#### **Wheelchair-accessible kitchen**

- Woodbrook has an open plan kitchen with level access.
- The route is 1000mm wide, or more.
- Work surfaces are 910mm high, with a lowered section at 770mm high. The lowered work surface has a clear underspace.
- Upon request, a convection oven/microwave and 2 ring electric hob can be placed on the lowered section of the work surface.
- The section beneath the sink can be removed upon request.
- The table and plates have high colour contrast.
- Flooring is Amtico.
- There is a carver chair in the bedroom.



Woodbrook accessible kitchen

#### Living room

- The route from the main entrance to the lounge is level access and 1000mm wide or more.

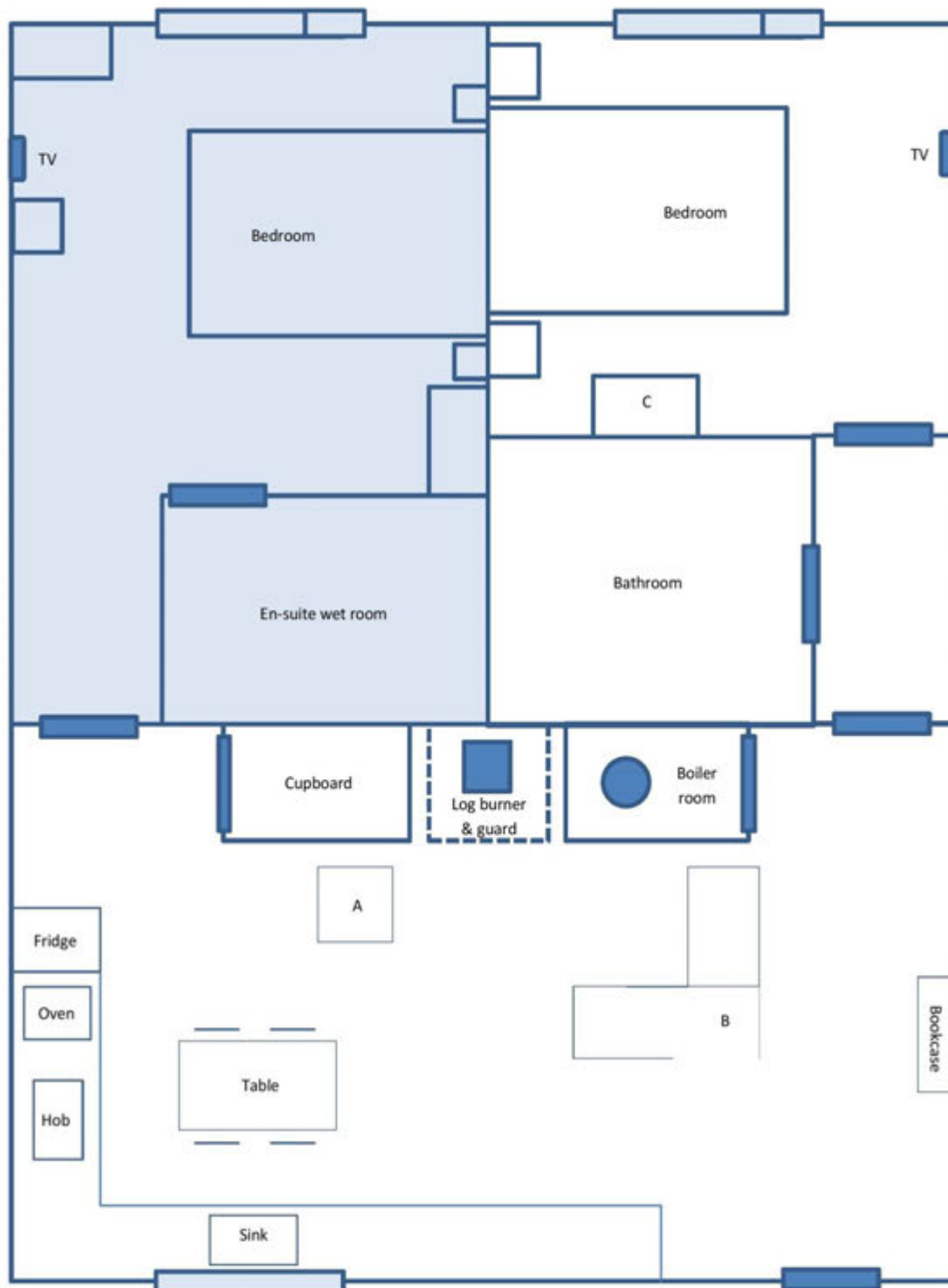


Woodbrook living room



Woodbrook floorplan

## Woodbrook Cottage (not to scale)

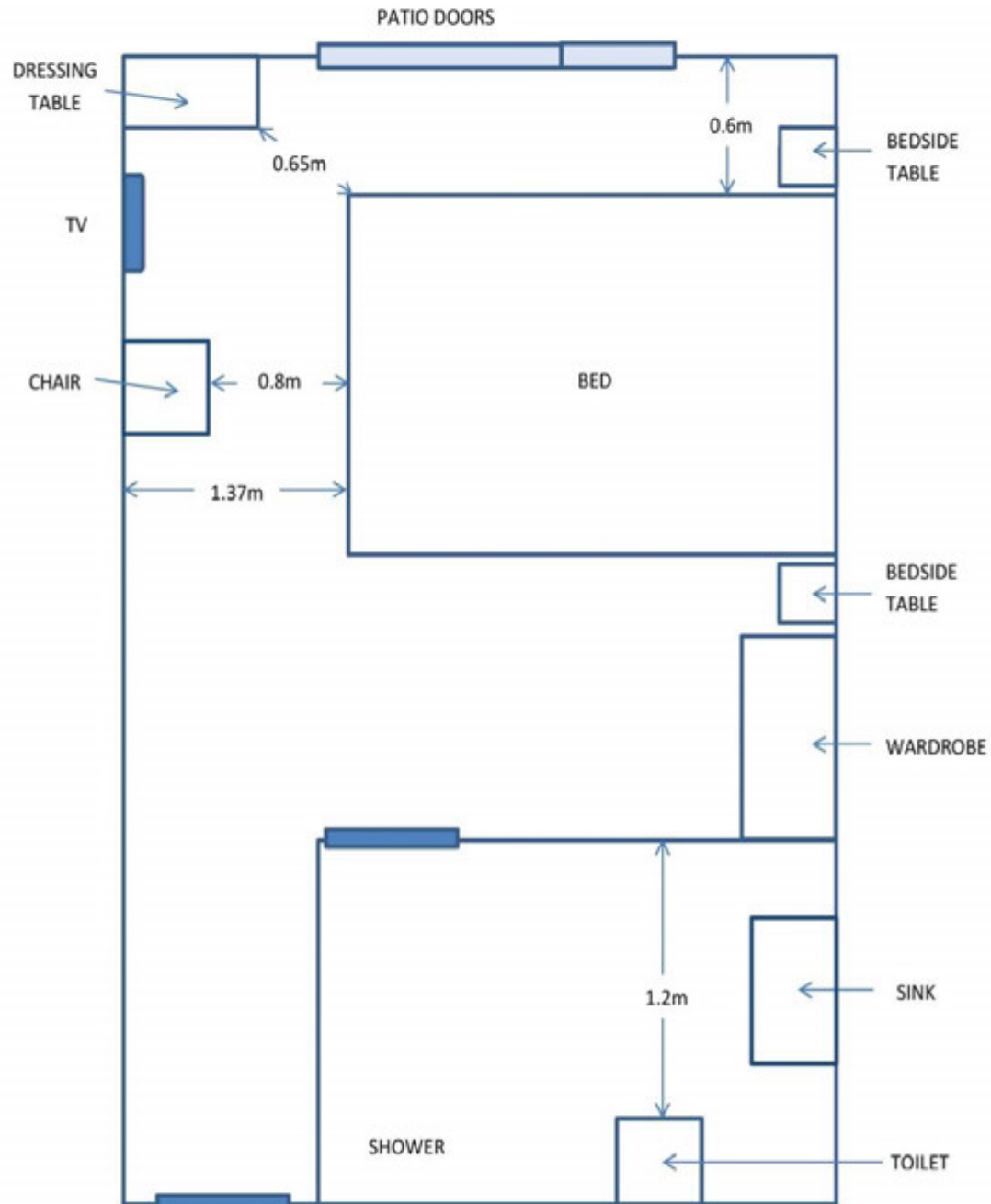


### Key



- A Armchair (0.89m x 0.89m, seat height is 0.47m)
  - B Corner Sofa (2.08m x 2.08m, seat height is 0.46m)
  - C Wardrobe
- (All furniture can be moved to the most convenient layout)

 All internal doorways (except cupboards) are 0.82m wide; front door is 0.90m wide

# Woodbrook – en-suite wet room (not to scale)



## KEY

- Door (0.82m)  Patio door (0.85m) 
- Shower (wet room, no shower tray, taps 1.12m above floor)
- Sink (height adjustable)
- Wardrobe (rail can be lowered to 0.9m)
- Bed (super kingsize (2m long x 1.8m wide or twin, 0.55m high)
- Bedside table (0.8m high) with touch-activated light
- Dressing table (fixed, 0.75m x 0.45m; height 0.73m)

## M2-rated cottage – Hedgehunter



### Wheelchair-accessible bedroom & ensuite wet room

- There is one fully accessible bedroom in Hedgehunter.
- The route to the bedroom is 820mm wide, or more. The bedroom door is 820mm wide. There is 600mm at the side of the bed. The bed is 550mm high.
- The bed can either be made up as a super king or a twin.
- The space at the side of the bed is 600mm at its narrowest point. From other sides it is 1400mm or wider.
- There is a dressing table with space for a wheelchair underneath.
- A portable hoist is available to be hired from Solent Mobility.
- All bedrooms have ceiling lights, bedside touch lamps and natural daylight.
- Lights are LED or have energy-saving bulbs.
- Subtitles are available on all televisions.
- We have non-allergic bedding available on request.
- All bedrooms are non-smoking.
- The bedrooms all have oak flooring.
- We use non-allergic cleaning products.
- We can move the bedroom furniture, where possible, to improve accessibility.
- We have bed blocks available on request.



Hedgehunter accessible bedroom



- The bathroom is an ensuite wet room. The bathroom door is 760mm wide.
- The bathroom has a level access shower and a bath. A shower chair is available. The direction of transfer to the toilet is to the front or side transfer via the shower area. There is 3000mm in front of the toilet. The toilet seat is 420mm high.
- The basin is 780mm high, but is adjustable and can be raised and lowered as required from 700mm to 870mm high. The taps are lever operated. There is space under the basin, with no pedestal.
- The bathroom has an emergency call system.
- Adjustable grab rails, toilet raisers, a showering wheelchair, a step stool, a perching chair and a commode are available – see the equipment list on our website.
- There is a swing bin in the cottage.



Hedgehunter accessible wet room

## Kitchen

- Hedgehunter has an open plan kitchen with level access.
- The route is 2200mm wide, or more.
- Work surfaces are 900mm high.
- Flooring is non-slip vinyl.
- There is a carver chair at the dining room table.



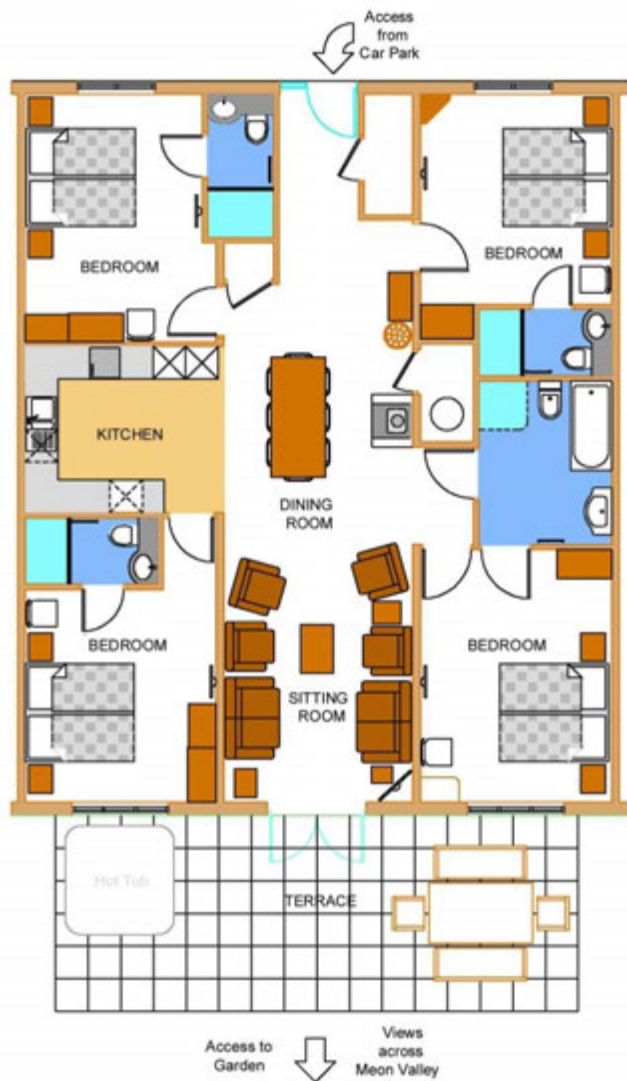
Hedgehunter kitchen

## Living room

- There is oak flooring.
- There is an armchair.



Hedgehunter living room



## HEDGEHUNTER

Hedgehunter floorplan


## Hedgehunter Cottage (not to scale)



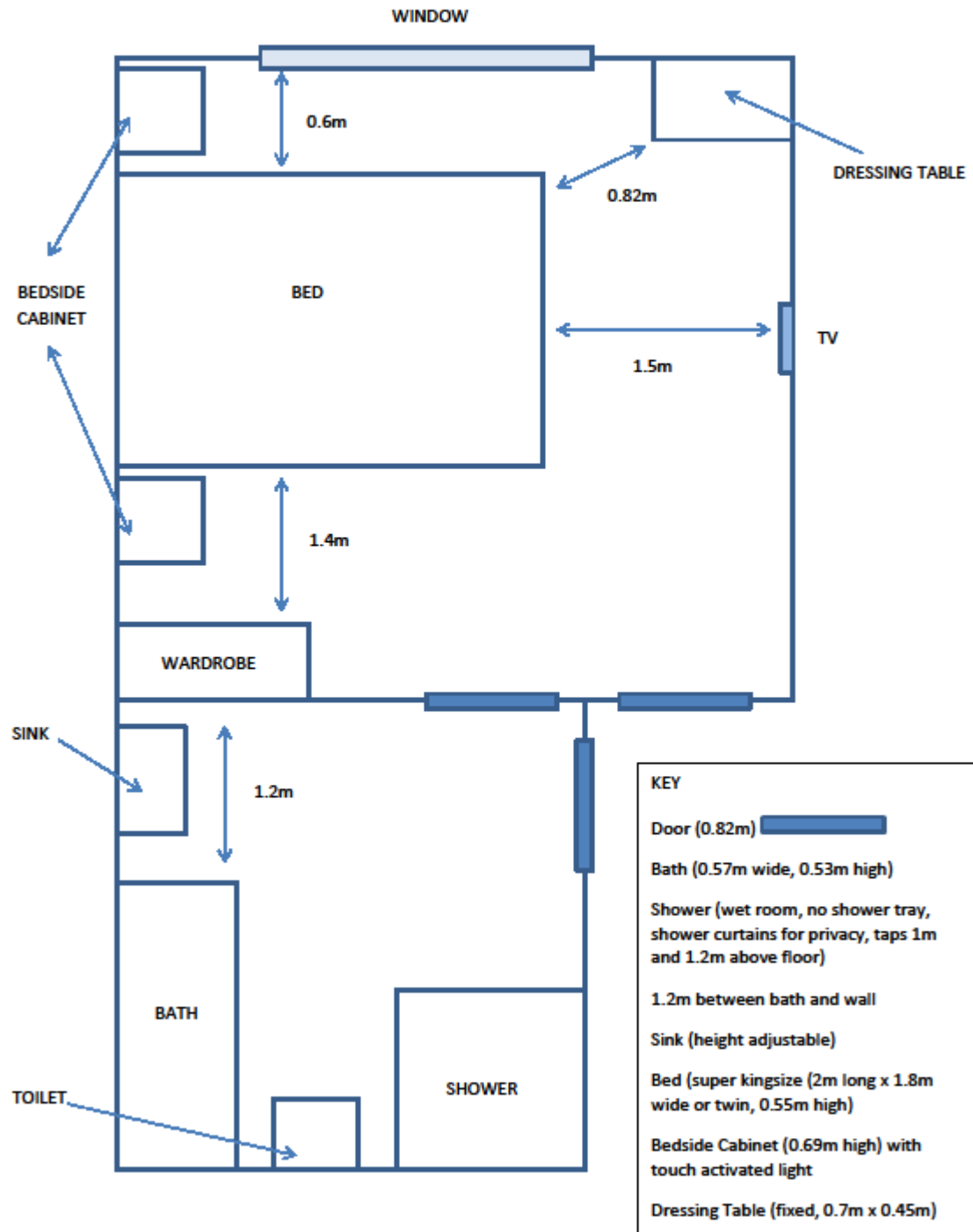
### Key

- A Straight Back Armchair (0.80m x 0.70m, seat height is 0.54m)
- B Wingback Armchair (0.85m x 0.76m, seat height is 0.44m)
- C Wingback Armchair (0.80m x 0.84m, seat height is 0.58m)
- D Two-seater Sofas (1.6 x 0.84m, seat height is 0.46m)
- E Safety guard surrounding wood burning stove (0.92 x 0.78m)
- F Cupboard

(All furniture can be moved to the most convenient layout)

 All internal doorways (except cupboards) are 0.82m wide, front door is 0.90m.

# Hedgehunter - en-suite wet room / bathroom (not to scale)



## M1-rated cottages – Early Mist, Glenside & Sundew



### Bedrooms & ensuite bathrooms

- All bedrooms have ceiling lights, bedside touch lamps in one bedroom and natural daylight.
- Lights are LED or have energy-saving bulbs.
- Subtitles are available on all televisions.
- We have non-allergic bedding available on request.
- All bedrooms are non-smoking.
- The bedrooms all have oak flooring.
- Bedroom doorways are 820mm wide, except in Early Mist where 3 bedroom doorways are 760mm.
- Bed height is 630mm from floor to top of mattress.
- We use non-allergic cleaning products - details can be provided on request.
- We can move the bedroom furniture, where possible, to improve accessibility.
- We have bed blocks available on request.
- Bath height is 530mm, except in Early Mist where it is 395mm high.
- The bathrooms in Early Mist are smaller than the other cottages.
- There is a swing bin in one bathroom in each cottage.



Sundew bedroom



Early Mist ensuite

## Kitchen

- Cottages have open plan kitchens with level access.
- The route is 2200mm wide, or more.
- Work surfaces are 900mm high.
- Flooring is non-slip vinyl.
- There is a carver chair at each dining room table.



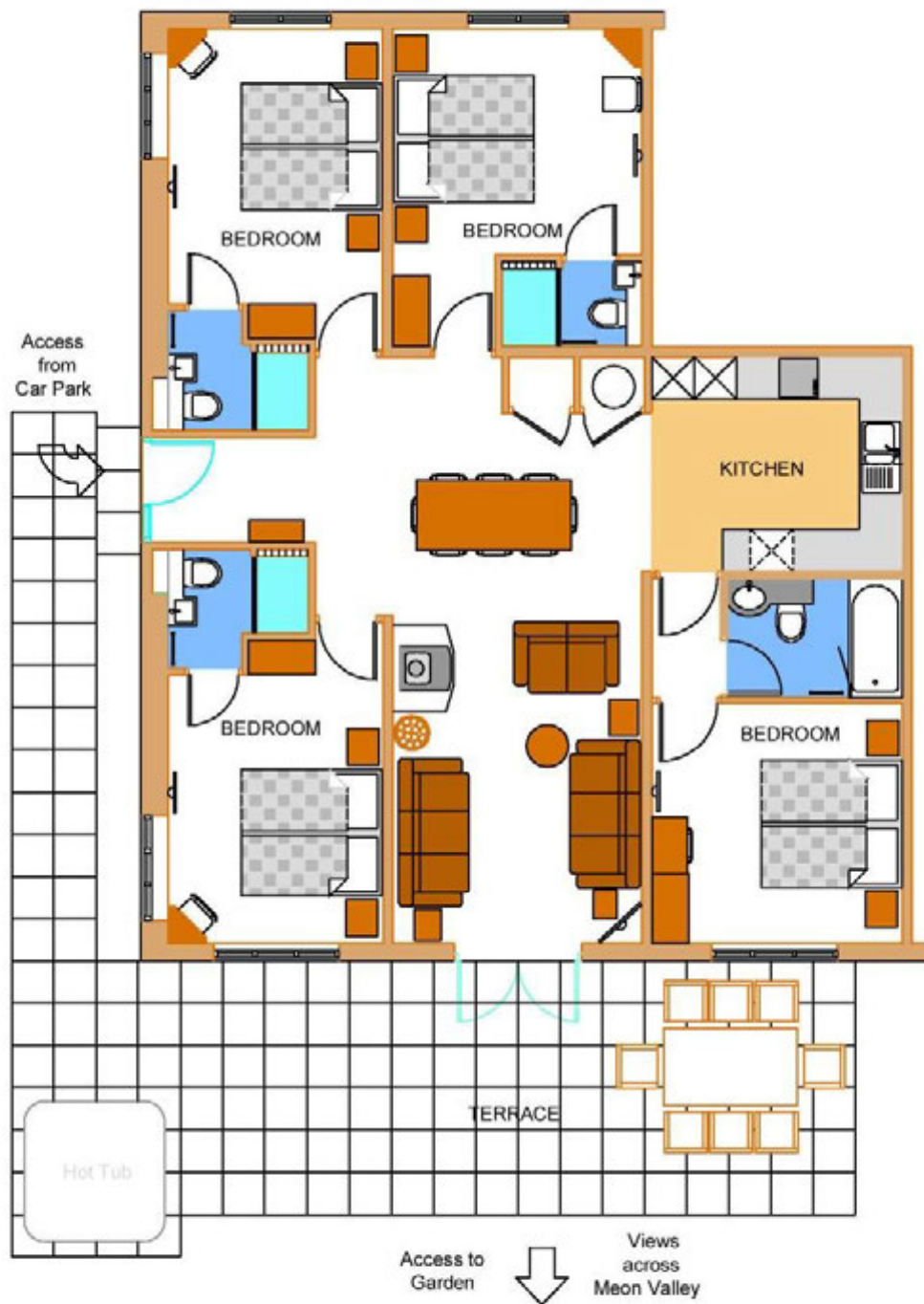
Glenside kitchen

## Living room

- There is an armchair in each cottage except Early Mist.



Early Mist living room



## EARLY MIST

Early Mist floorplan (please note small bathrooms)





Glenside floorplan



SUNDEW

Sundew floorplan

## M1-rated cottage – Skeldale



### Bedrooms & bathrooms

- The bedrooms all have fitted carpets.
- Bedroom doorways are 740mm wide or more.
- All bedrooms have ceiling lights and natural daylight. There are touch lamps in one bedroom.
- Lights are LED or have energy-saving bulbs.
- Subtitles are available on all televisions.
- We have non-allergic bedding available on request.
- All bedrooms are non-smoking.
- Bed height is 630mm from floor to top of mattress.
- We use non-allergic cleaning products - details can be provided on request.
- We can move the bedroom furniture, where possible, to improve accessibility.
- We have bed blocks available on request.
- Bath height is 530mm.
- There is a swing bin in the cottage.
- Bathrooms are not ensuite.



### Kitchen

- There is one step access from the entrance into the kitchen.
- Work surfaces are 900mm high.
- There is a carver chair at the dining table.



### Living room

- There is one step access from the entrance into the hallway and then level access to the living room.



Skeldale bedroom



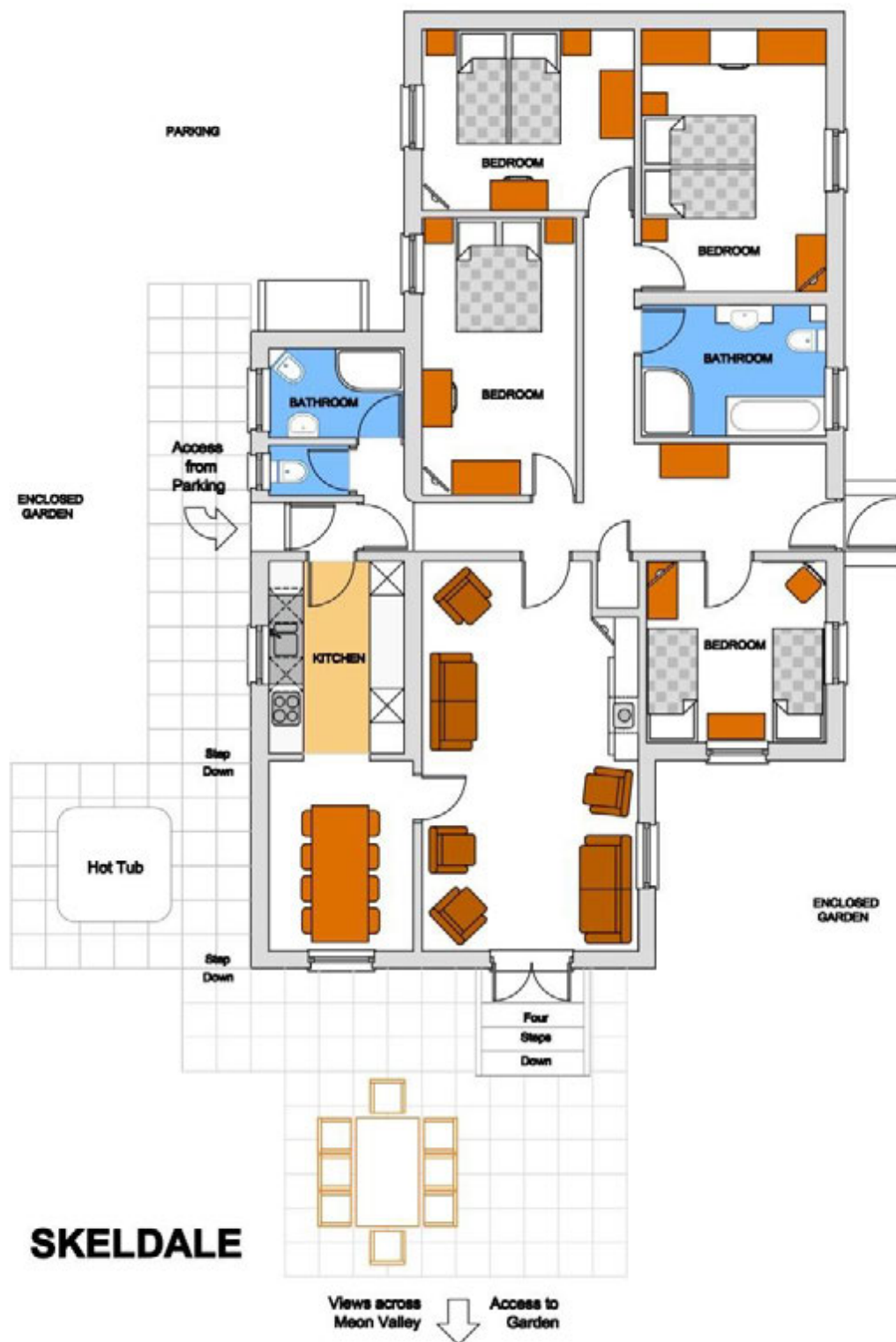
Skeldale bathroom



Skeldale kitchen/diner



Skeldale living room



Skeldale floorplan

## All cottages



### Laundry facilities

- There is a washer/dryer in all cottages in the kitchen, all with level access. There is an iron and ironing board in each cottage. You can use the ironing board sitting down.
- The iron and ironing board can be found in the cupboard located in the living/dining area in all cottages except Skeldale, where they are in hallway cupboard.

## Getting around outside



### Gardens

- There is level access from all cottages into their individual gardens except Skeldale, where there is 4 step access from the living room and one step access from the kitchen and hallway.
- The route is 1700mm wide, or more, from all cottages except Skeldale.
- There is level access from all individual gardens onto the large shared lawn area except Skeldale, where there is 5 step access.



Shared large lawn area



### Patios

- Teak garden furniture is on each patio - a table (1.90m x 1.10m) with 2 benches (seat height is 0.45m) and 2 carver-style chairs with arms (seat height is 0.46m) in Teal and Hedgehunter.
- In all other cottages there are chairs without arms (seat height is 0.46m) instead of the benches.
- There is a hot tub on the patio of each garden, Entry is via 2 steps – unfortunately it is not possible to use a hoist to enter these.





View across patio and garden from Glenside



View across garden to Skeldale

## Customer care support



### Accessibility equipment

- We can provide attendant-propelled wheelchairs, a suspended bath seat, furniture raisers, extendable suction grab bars, an adjustable height walking aid, a lightweight wheeled rollator with rest seat, bed rails, a vibrating alarm clock, a raised toilet seat with frame, commodes, a raise toilet seat, a perching stool, elbow crutches and a hand bell - all free of charge upon request.
- A list of all available equipment can be found at <https://www.wallopswoodcottages.co.uk/accessibility.html>.
- Guests can hire a Birdie hoist, profiling bed and a mobility scooter from Solent Mobility, which can be installed prior to arrival, by calling 023 9200 9999.
- All dogs, including assistance dogs, can use the cottages individual secure gardens or large lawned area for toileting. Dog litter bags, a dog litter bin and a dog shower are provided. A dog welcome basket is included in the cottages.
- Battery powered wheelchairs and mobility scooters can be recharged using any of the power points in the cottages.



Dog litter bin



Dog shower



### Emergency evacuation procedures

- We have emergency evacuation procedures for disabled visitors.



### Customer care support

- Most staff have had disability awareness training.
- We have information in large print.
- Staff are available 24 hours a day.
- Smoke and carbon monoxide alarms are fitted in each cottage.
- Help is available by dialling the contact number provided near the telephone in each cottage.



Wallops Wood Cottages staff with their Welcome All training certificates

---

Guide last updated : July 2019