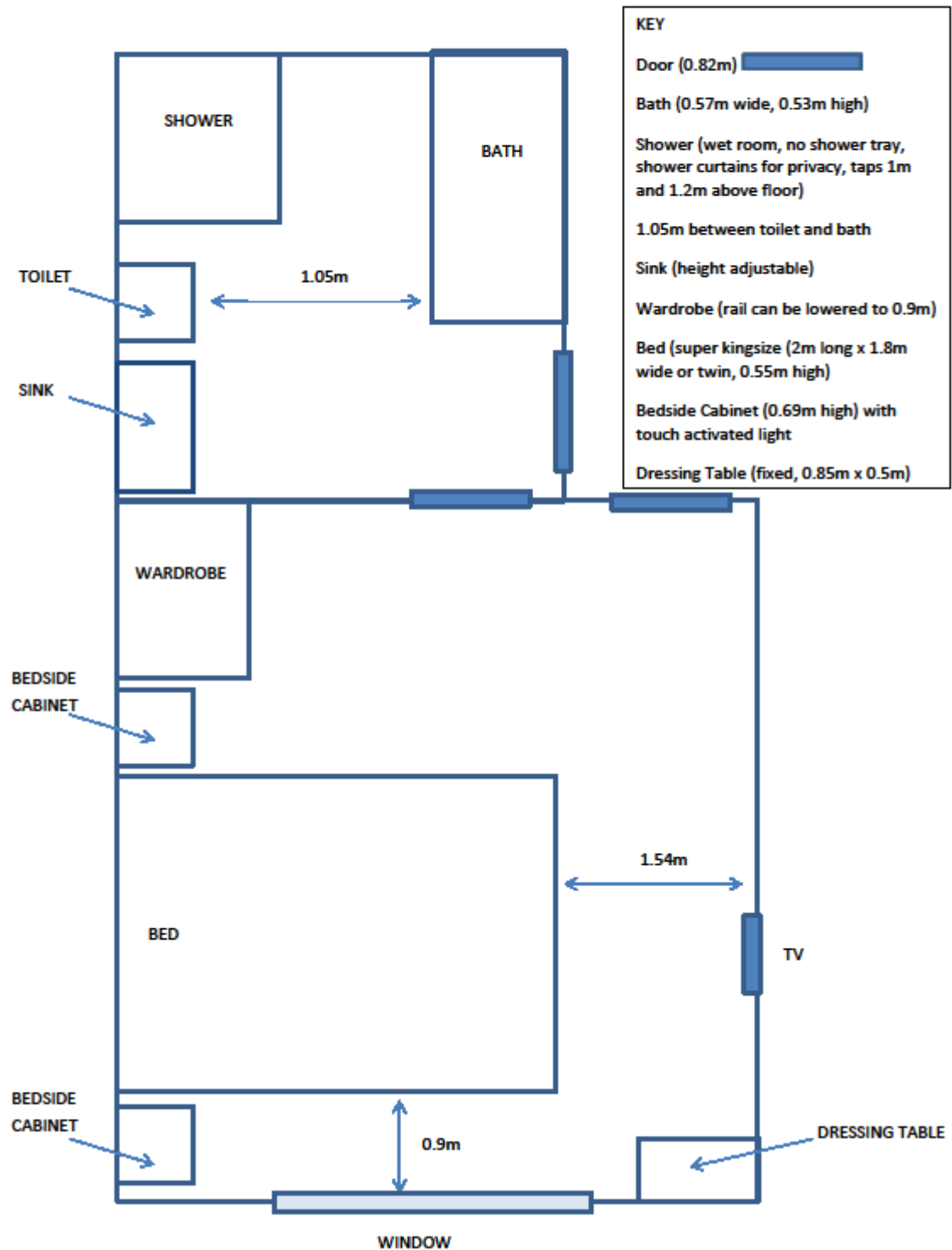
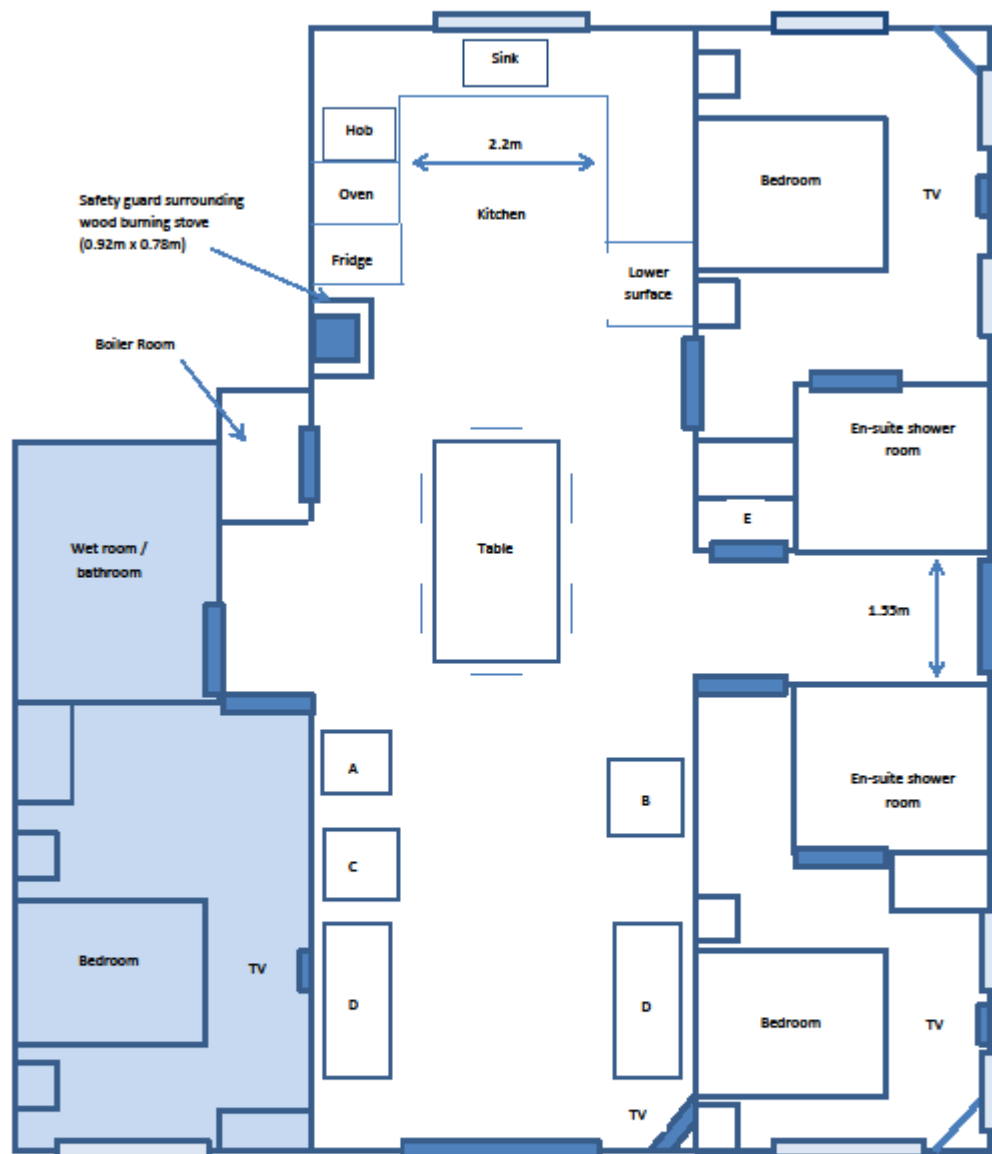


Floor plans of Teal (M3) and Hedgehunter (M2)

Teal – en-suite wet room /bathroom (not to scale)



Teal Cottage (not to scale)



Patio doors open to 1.70m

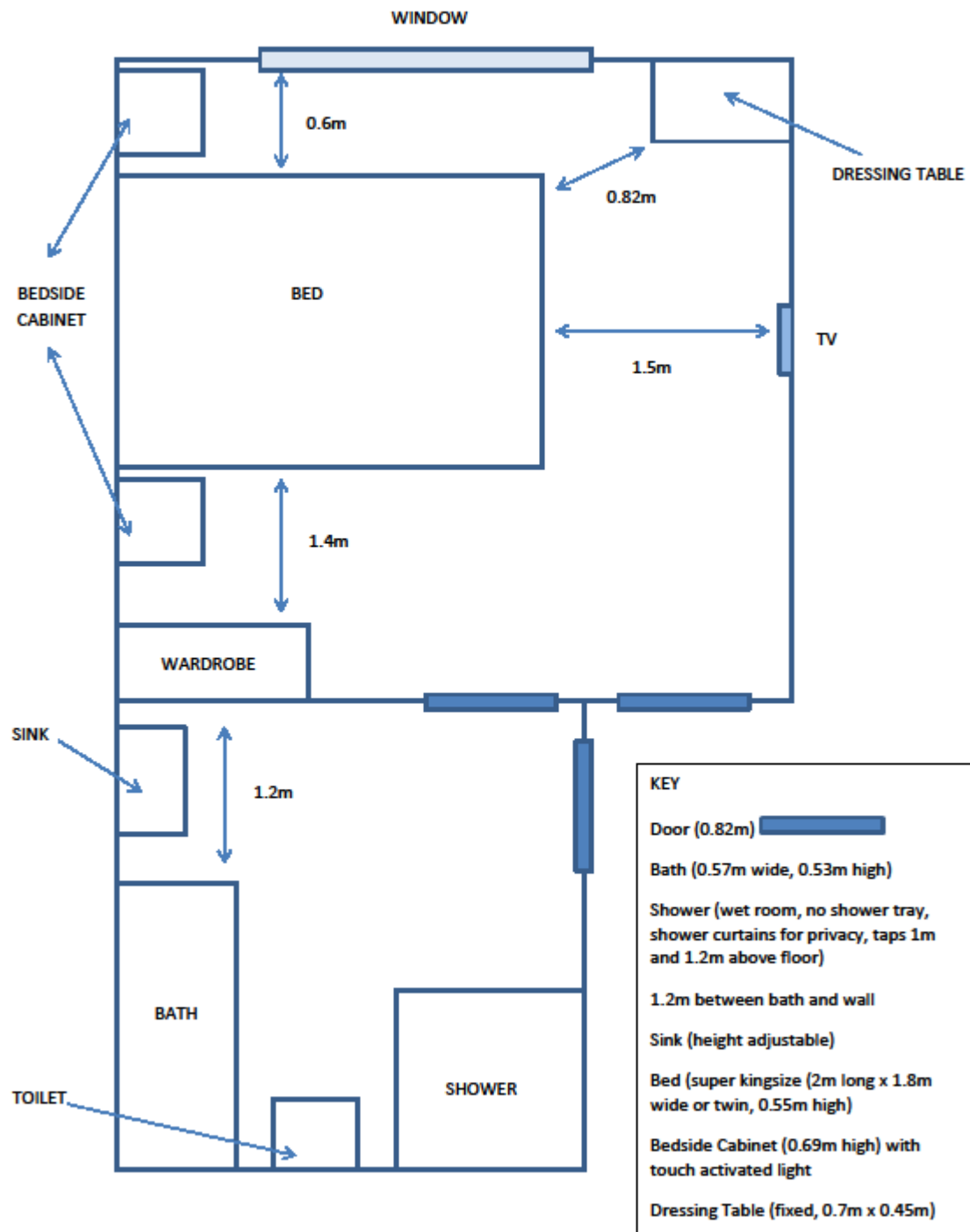
Key

- A Straight Back Armchair (0.62m x 0.64m, seat height is 0.44m)
- B Electric recliner chair (0.84m x 0.80m, seat height is 0.49m)
- C Wingback Armchair (0.80m x 0.87m, seat height is 0.43m)
- D Two-seater Sofas (0.90m x 1.44m, seat height is 0.50m)
- E Cupboard

(All furniture can be moved to the most convenient layout)

All internal doorways (except cupboards) are 0.82m wide, front door is 0.90m wide

Hedgehunter - en-suite wet room / bathroom (not to scale)




Hedgehunter Cottage (not to scale)



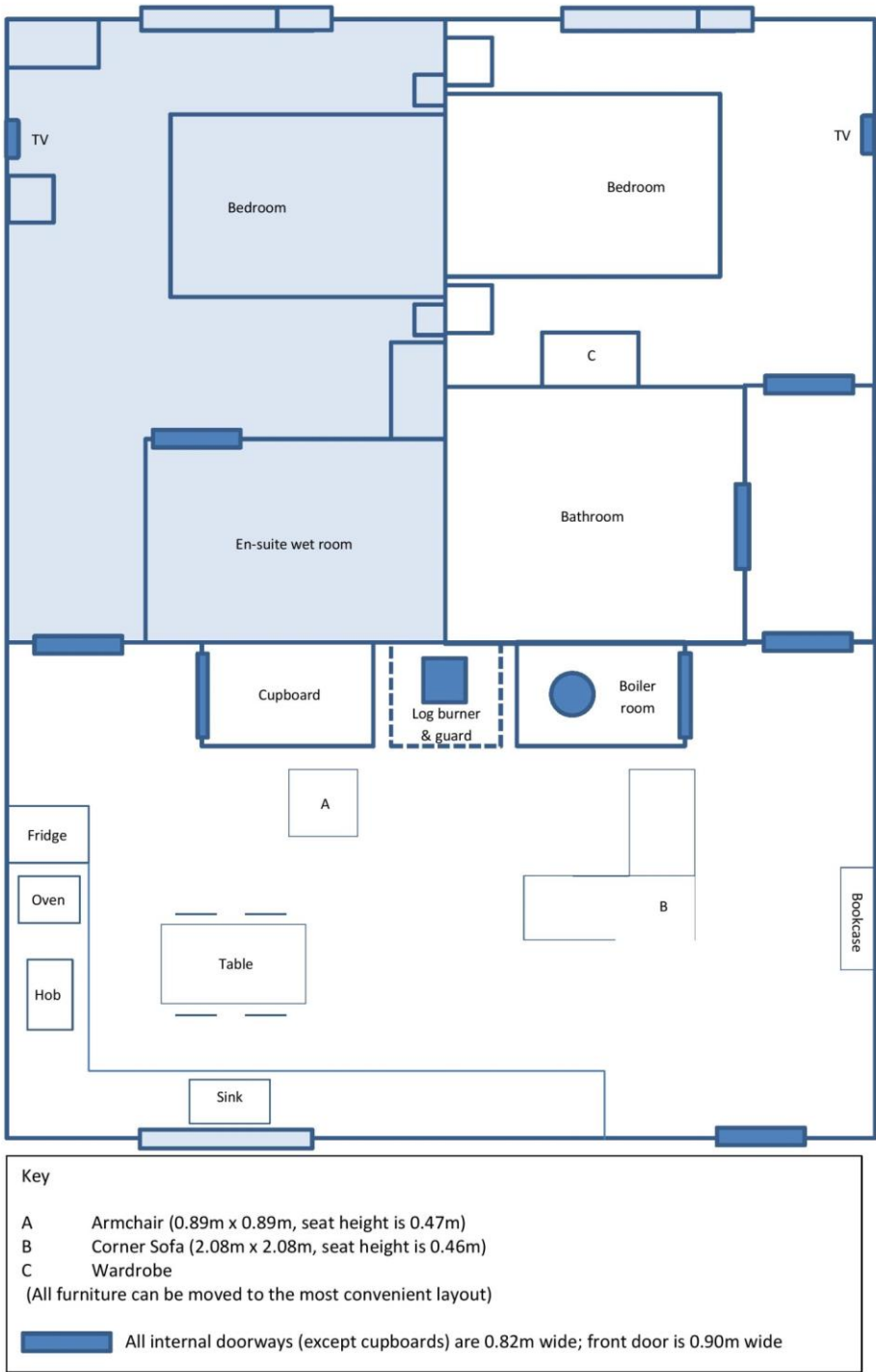
Key

- A Straight Back Armchair (0.80m x 0.70m, seat height is 0.54m)
- B Wingback Armchair (0.85m x 0.76m, seat height is 0.44m)
- C Wingback Armchair (0.80m x 0.84m, seat height is 0.58m)
- D Two-seater Sofas (1.6 x 0.84m, seat height is 0.46m)
- E Safety guard surrounding wood burning stove (0.92 x 0.78m)
- F Cupboard

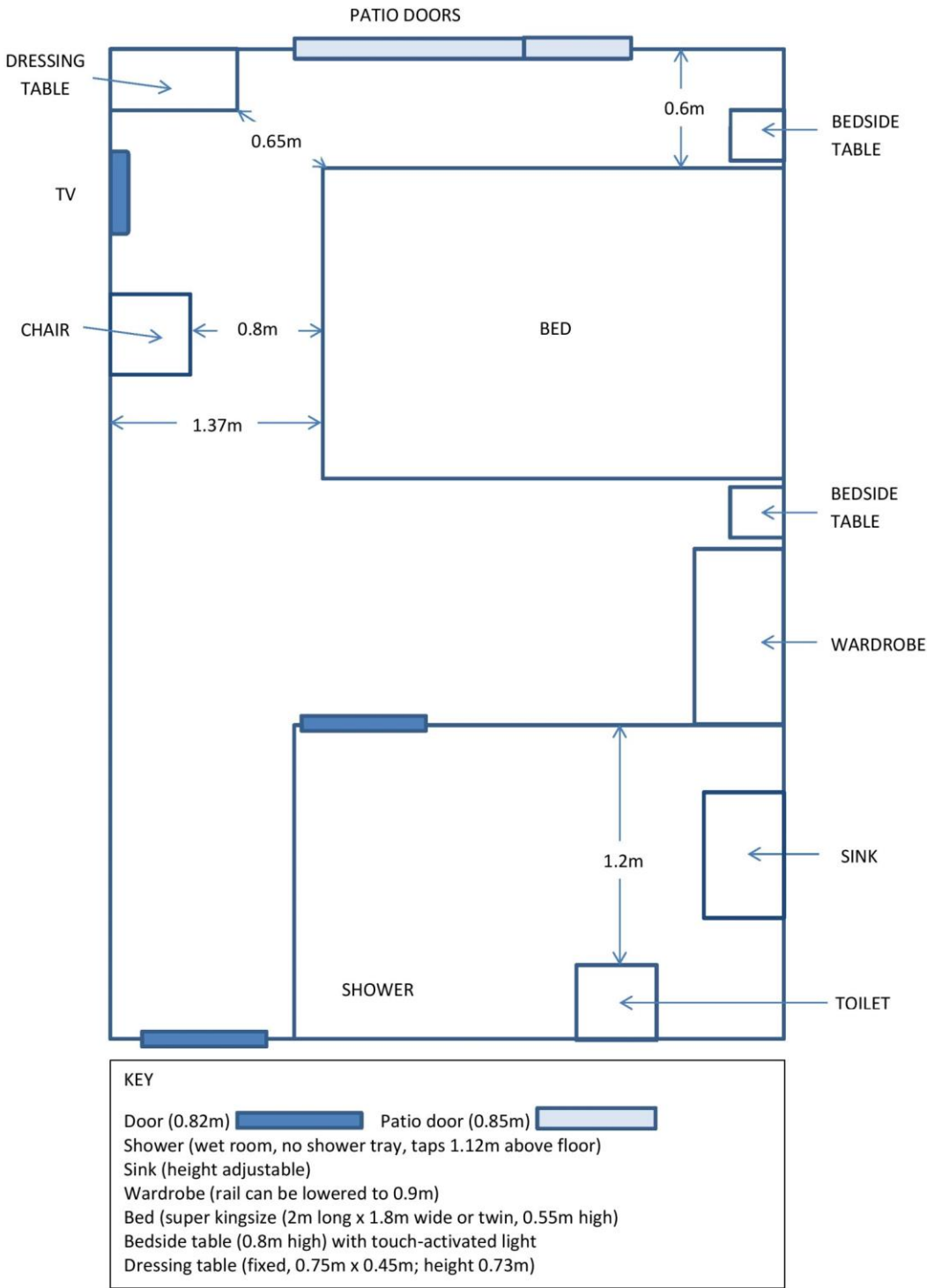
(All furniture can be moved to the most convenient layout)

 All internal doorways (except cupboards) are 0.82m wide, front door is 0.90m.

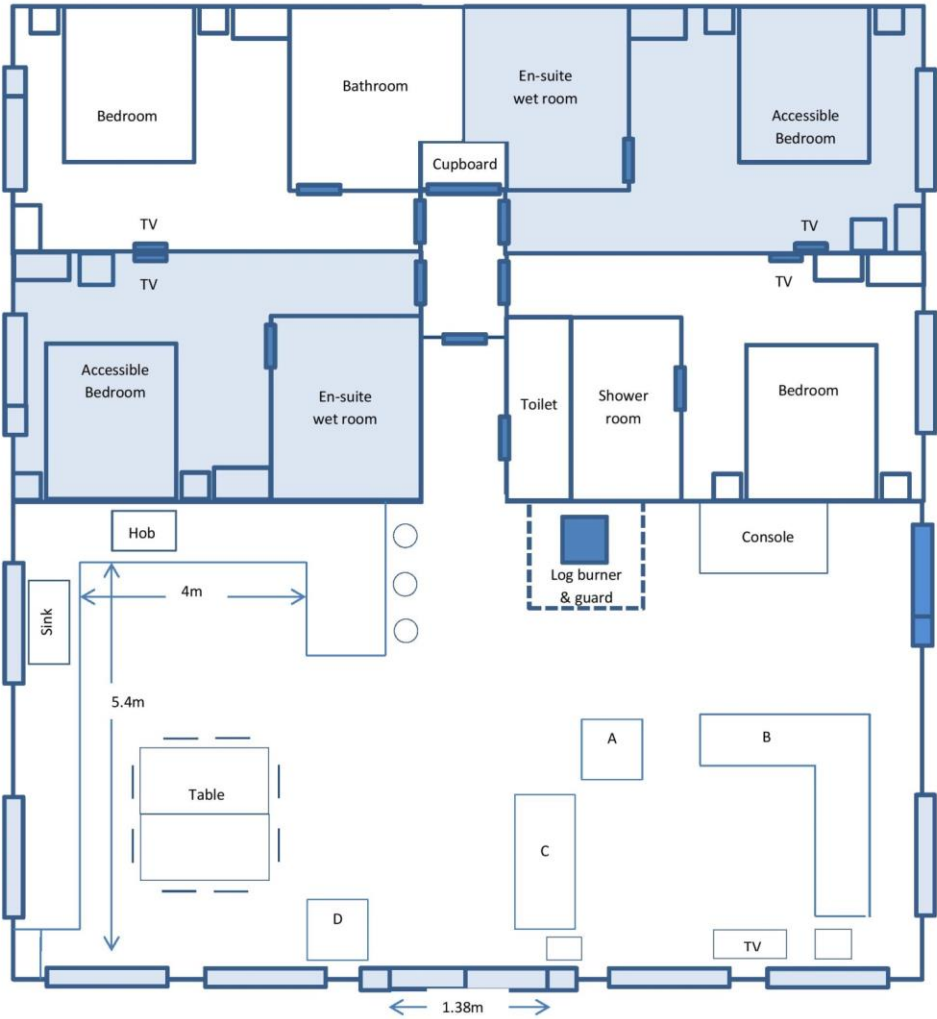
Woodbrook Cottage (not to scale)



Woodbrook – en-suite wet room (not to scale)



Silver Birch Cottage (not to scale)



Key

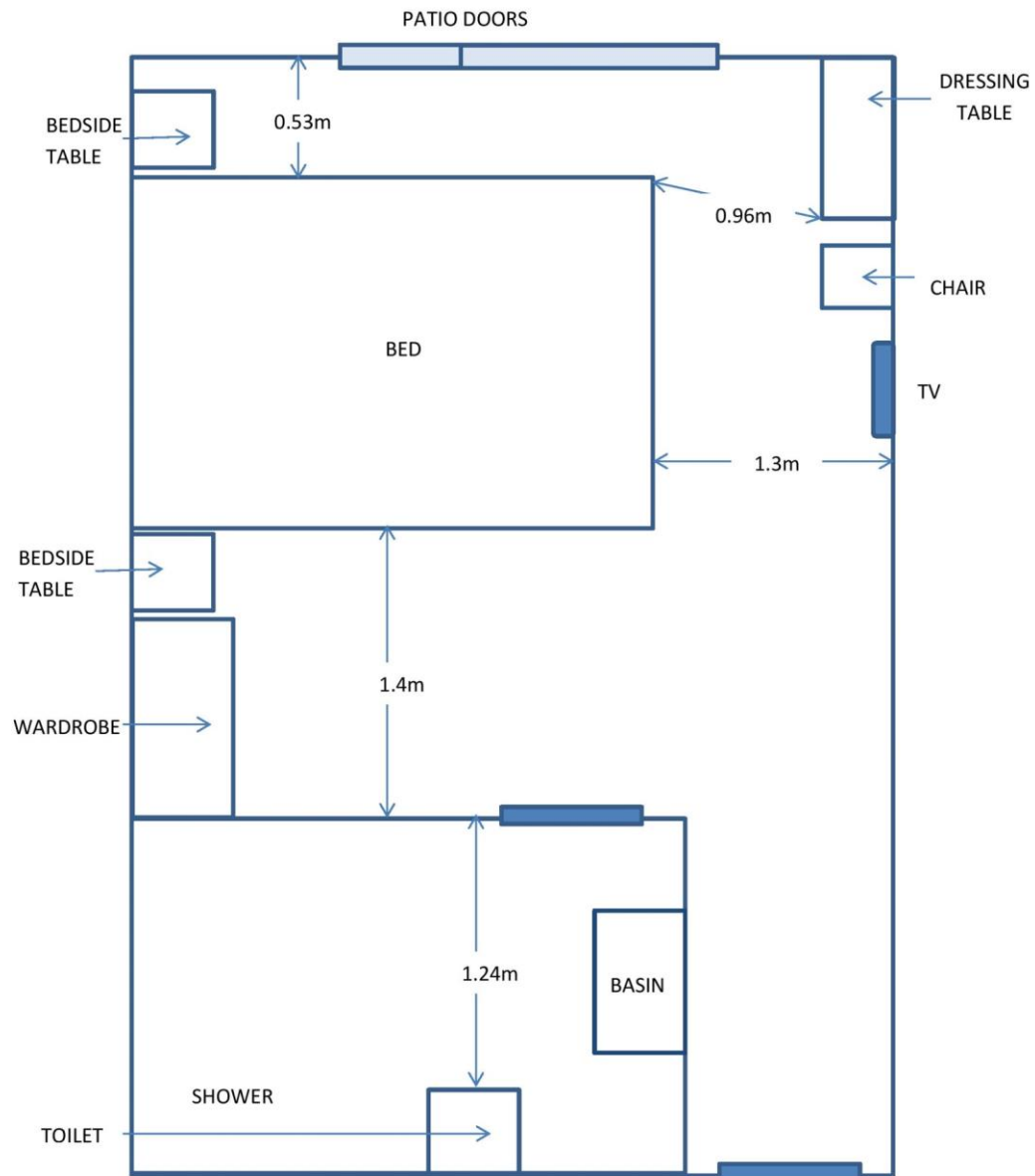
- A Armchair (1.19m x 0.93m, seat height is 0.54m)
- B Corner Sofa (2.56m x 2.56m, seat height is 0.55m)
- C Sofa bed (1.65m x 0.93m, seat height 0.54m)
- D Armchair (1.05m x 0.93m, seat height is 0.50m)

(All furniture can be moved to the most convenient layout)



IA All internal doorways (except cupboards) are 0.78m wide front door is 0.90m wide

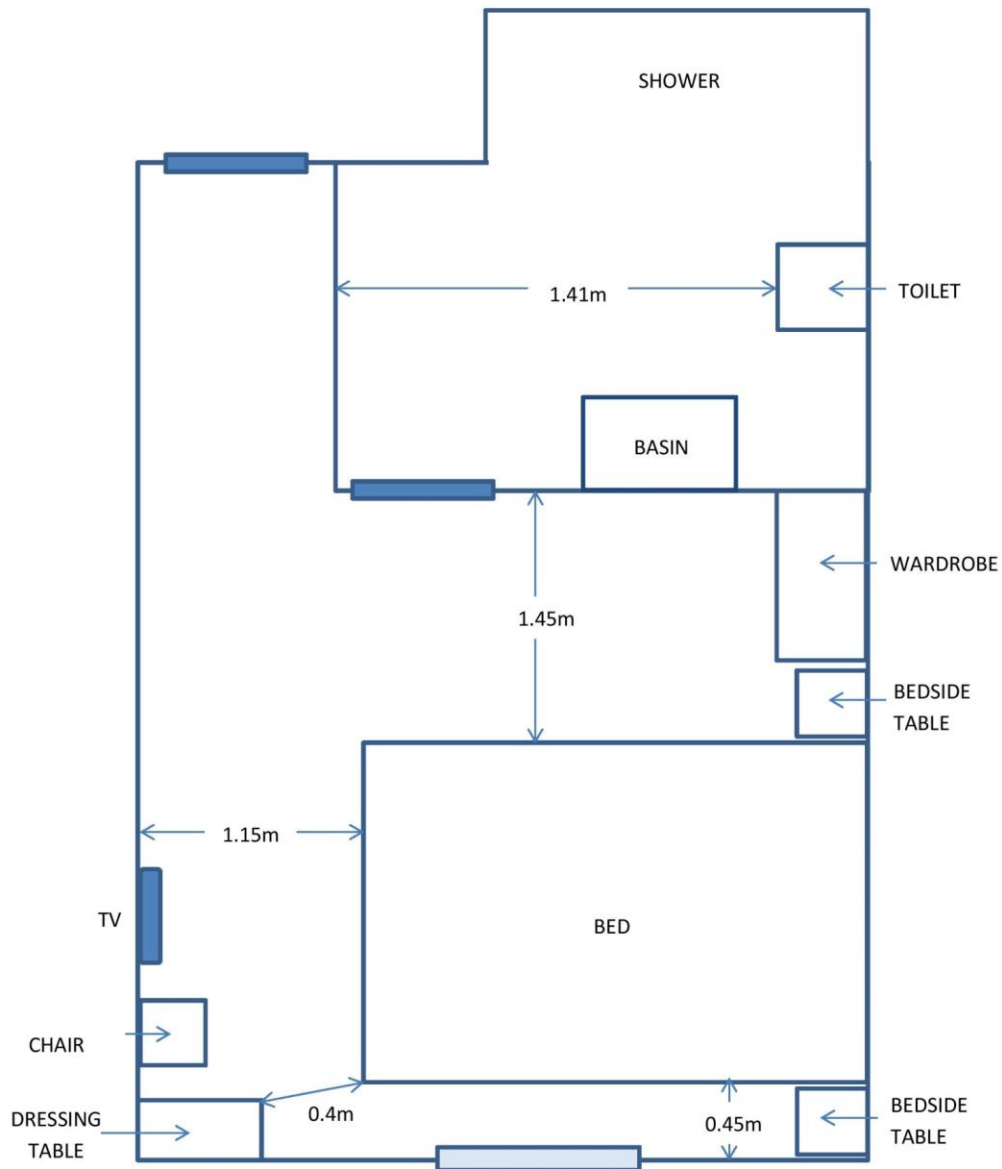
Silver Birch – en-suite wet room 1 (not to scale)




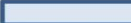
KEY

- Door (0.82m) Patio door (0.85m)
- Shower (wet room, no shower tray, taps 1.12m above floor)
- Sink (height adjustable)
- Wardrobe (rail can be lowered to 0.9m)
- Bed (super kingsize (2m long x 1.95m wide or twin, 0.67m high)
- Bedside table (0.69m high) with touch-activated light
- Dressing table (fixed, 0.75m x 0.45m)

Silver Birch – en-suite wet room 2 (not to scale)



KEY

- Door (0.82m)  Window (1.37m) 
- Shower (wet room, no shower tray, taps 1.12m above floor)
- Sink (height adjustable)
- Wardrobe (rail can be lowered to 0.9m)
- Bed (super kingsize (2m long x 1.9m wide or twin, 0.6m high)
- Bedside table (0.8m high) with touch-activated light
- Dressing table (fixed, 0.8m x 0.45m)